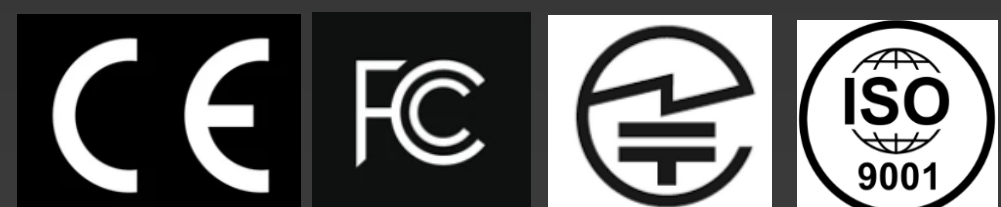
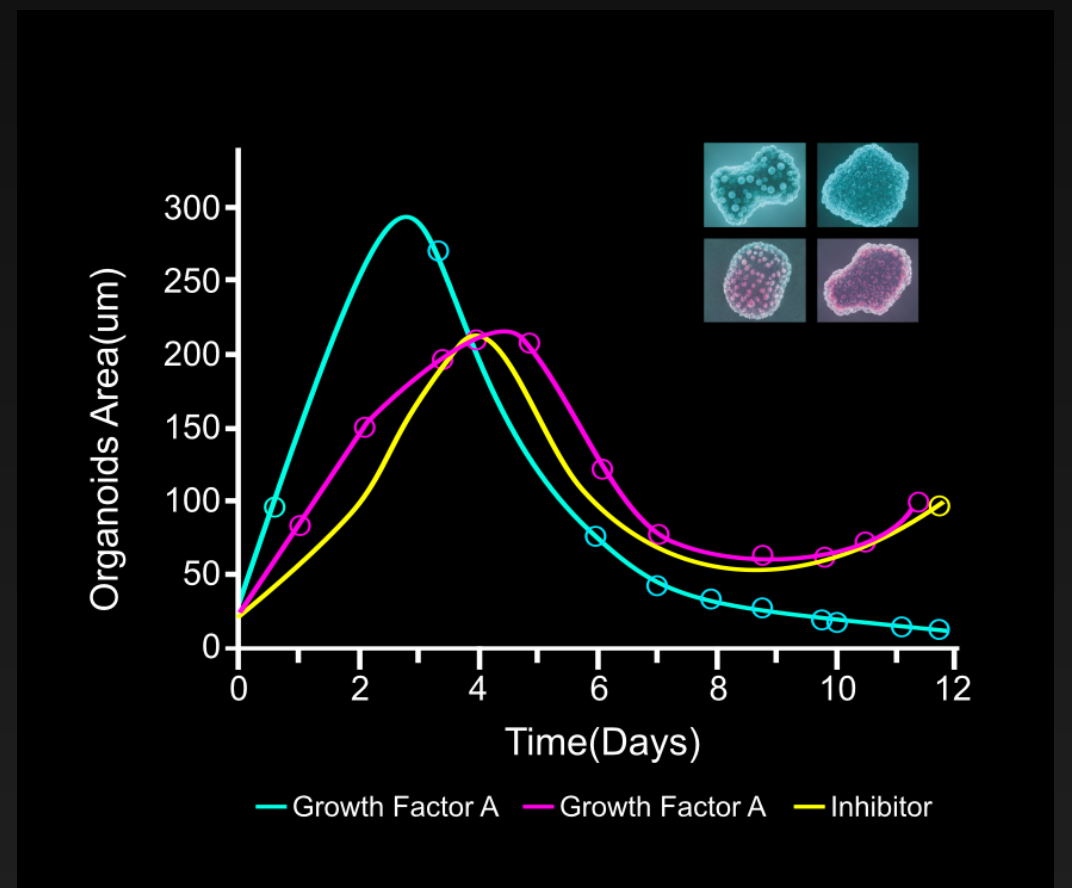
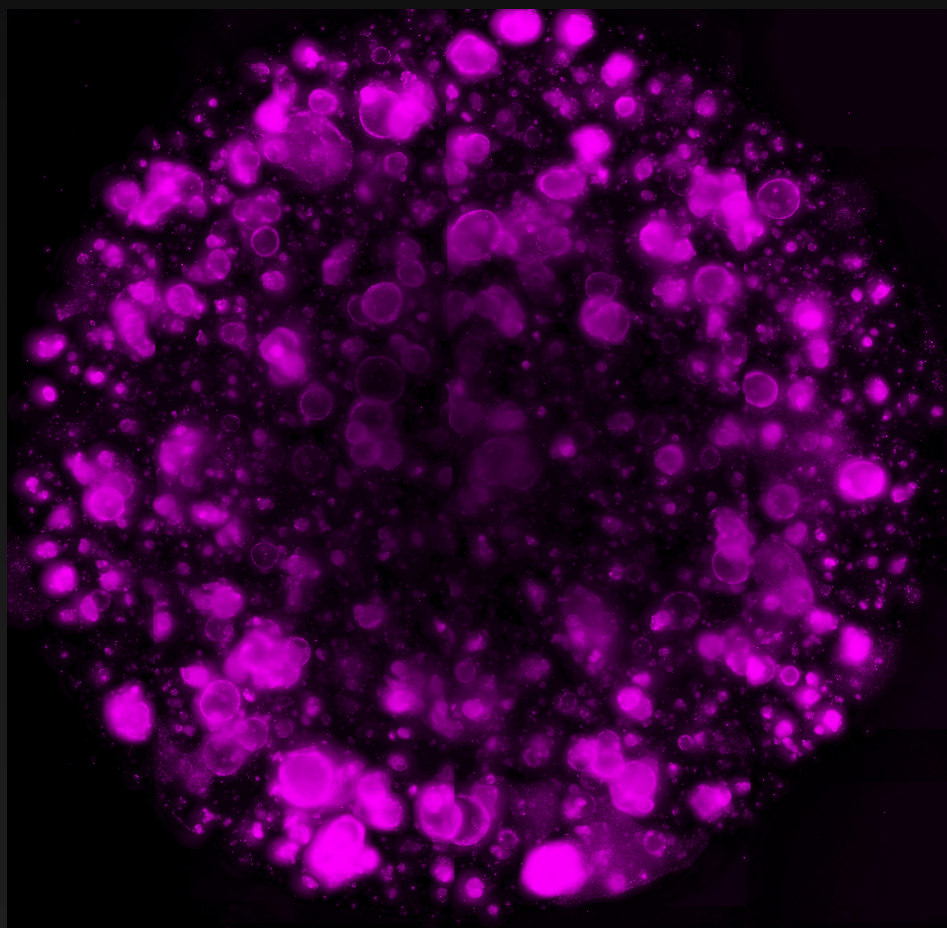


HSCORE

EOS Series

Next-Generation Long-Term Live Cell Imaging & Analysis System

Unveiling the Dynamics of Cell, Frame by Frame.



Precision Engineering Meets Artificial Intelligence Performance

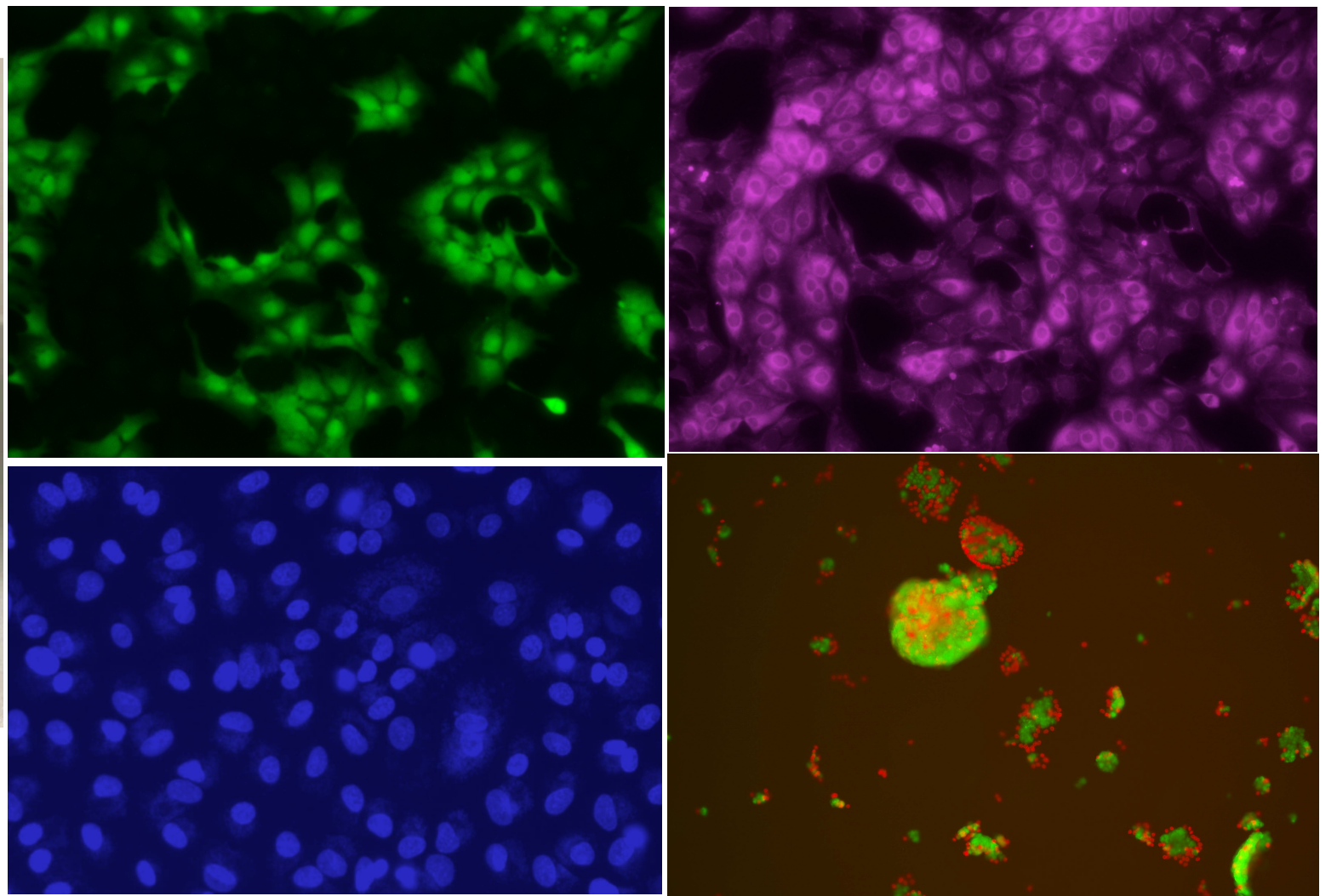
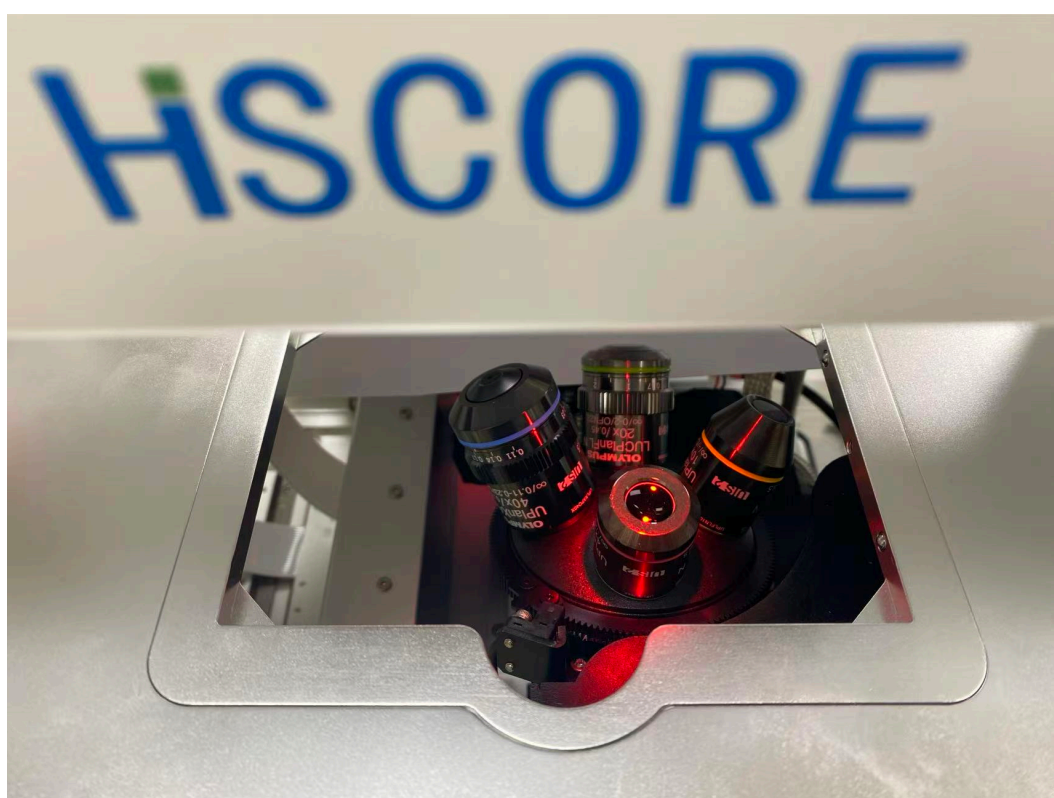
Imaging mode: Brightfield & Phase, Multi-Fluorescence, Z-Stacking, smart stitching

Objectives: Olympus objectives 4X,10X,20X,40X, motorized 4-position turret

Fluorescence: 4 fluorescent channels; RGB, NIR, AO/PI(viability analysis)

Advanced Automation: Fully automated XYZ stage with software-controlled multi-position tracking and flexible focus modes.

Supports independent Auto/Manual focus toggling per position, channel, and cycle for maximum precision.



Integrated Multimedia Suite & Intelligent Bio-Analysis

Our software provides a comprehensive suite for capturing, editing, and quantifying biological data. It supports multi-track video editing with grid-view split-screen functionality for simultaneous comparison of dynamic processes.

Furthermore, the system features built-in AI-driven algorithms for fully automated analysis and quantification, specifically optimized for confluence, wound healing, fluorescence intensity, and complex cellular metrics.

Continuous Long-Term Live-Cell Imaging

The EOS series is fully optimized for extended residence within CO₂ incubators.

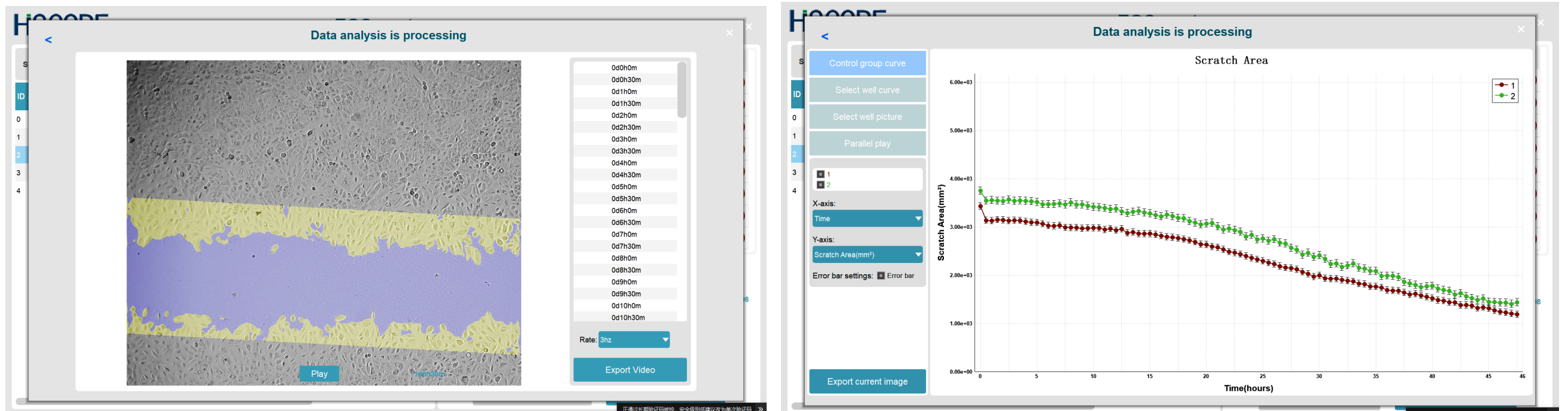
Supporting up to 30 days of continuous, automated imaging, it provides a stable, hands-free solution for monitoring complex biological processes over time.

Smart Support

The system supports full remote access and cloud-based technical support, allowing for real-time diagnostics and device management from anywhere in the world.

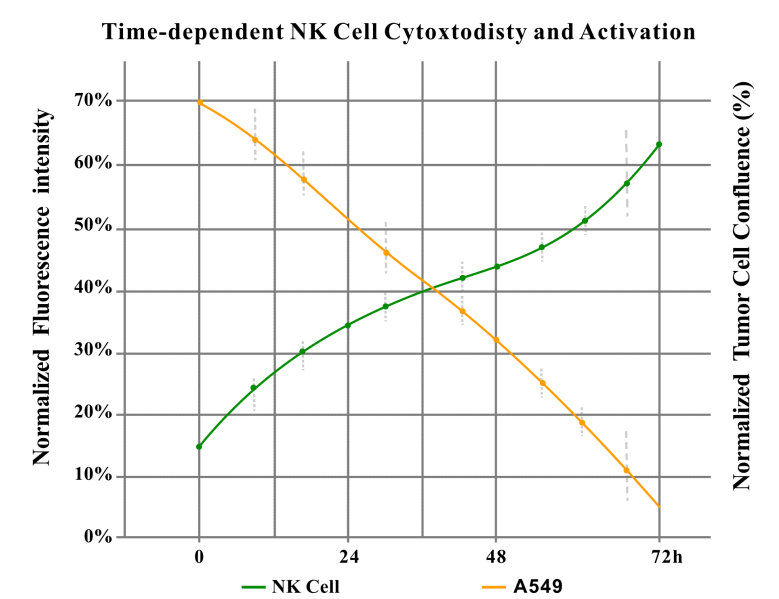
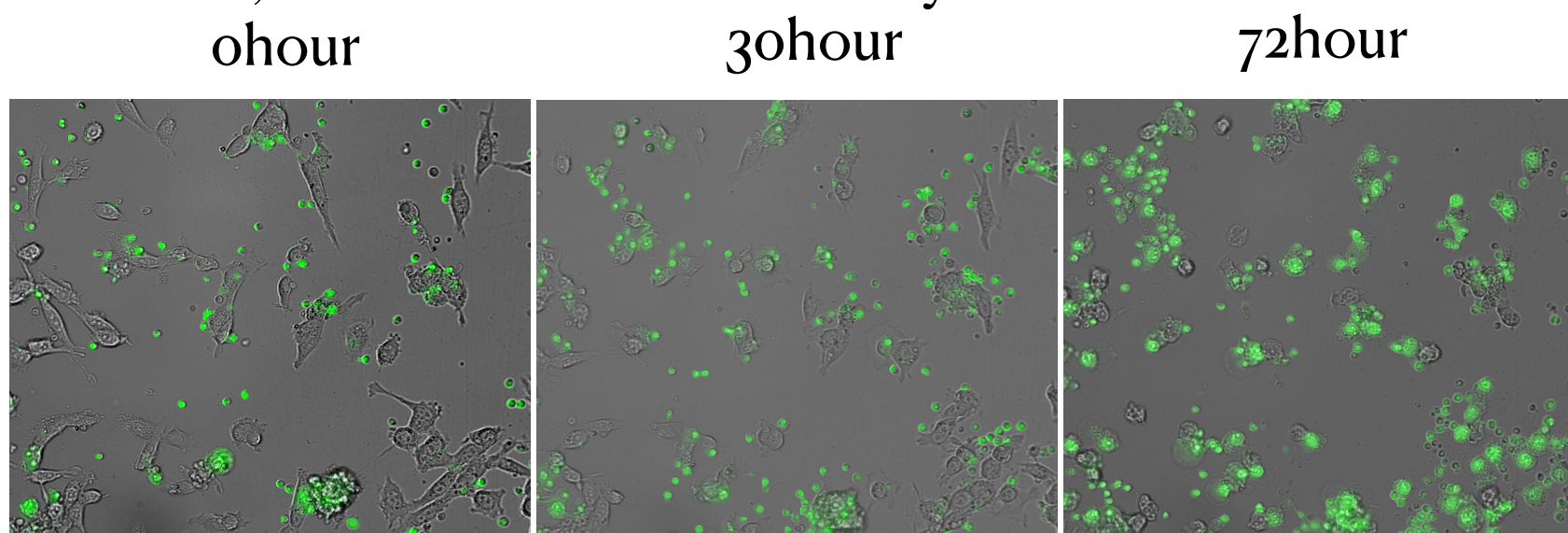
Scratch Assay & Migration Analysis

Effortlessly track cell migration with our high-contrast imaging and intelligent analysis module. From raw 96-well data to quantified growth curves and split-screen video reports—all in one seamless workflow. **Parameters:** Area, Width, Rate, Closure %, and Relative Wound Density (RWD).



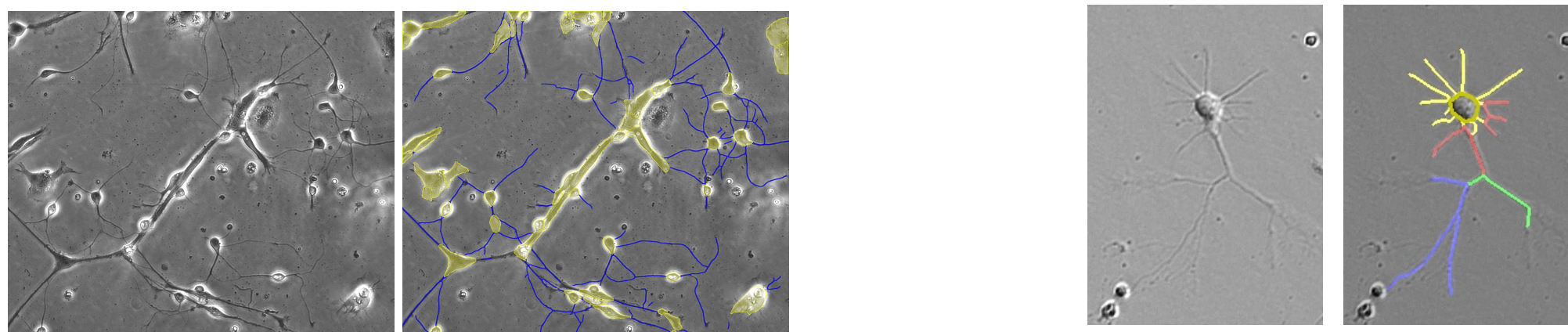
T-Cell Killing & Immune Oncology

Quantify the potency of CAR-T cells in real-time. Automatically calculate killing efficiency and effector-to-target cell interactions over 72+ hours. **Parameters:** Tumor Cell Confluence, Immune Cell Confluence, Total Fluorescence Intensity



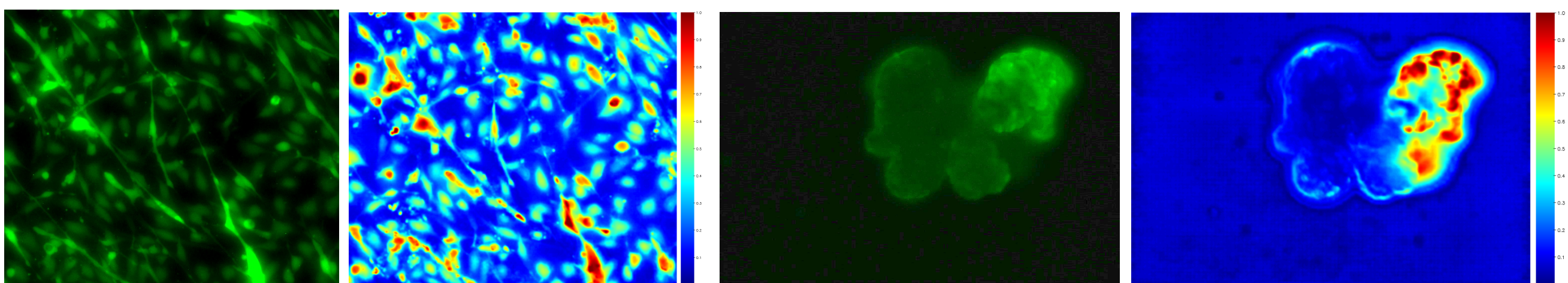
Advanced Neurite Outgrowth Analysis

Automatically quantify key morphological parameters such as neurite length, branching points, and process integrity over extended periods. Our intelligent algorithms provide precise, unbiased data for neuronal development, differentiation, and neurotoxicity studies.

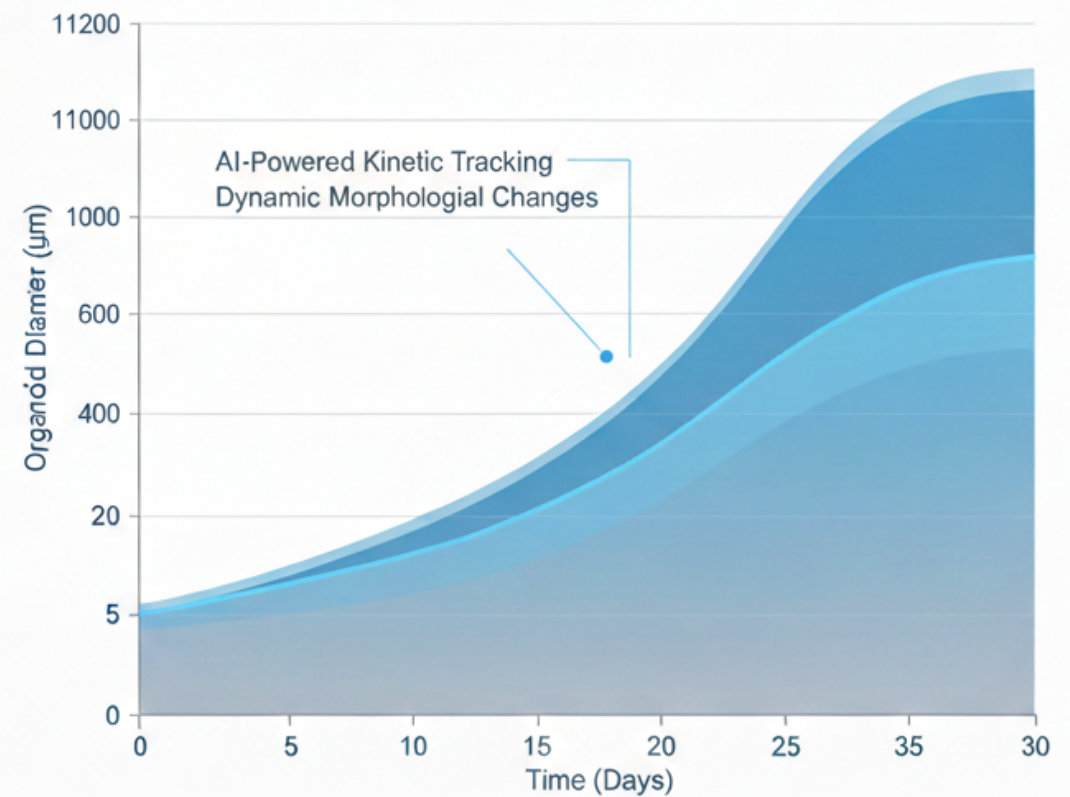
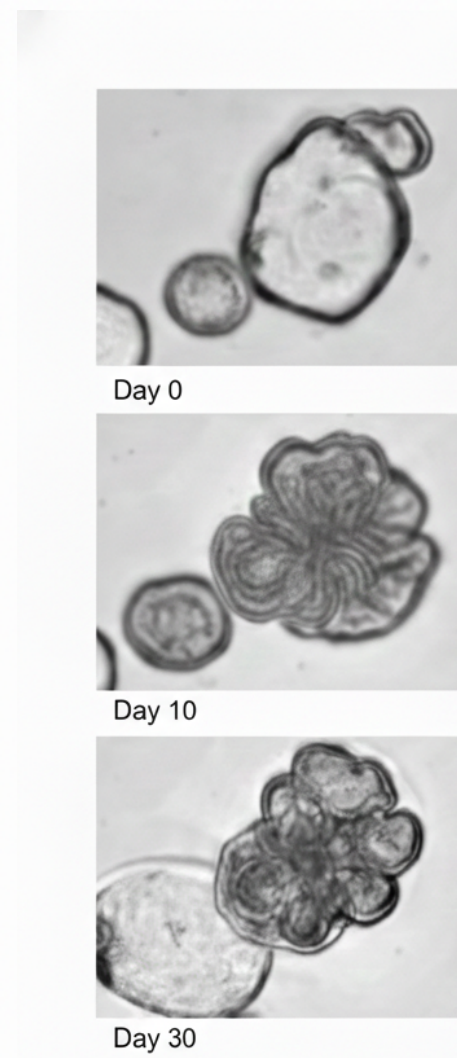
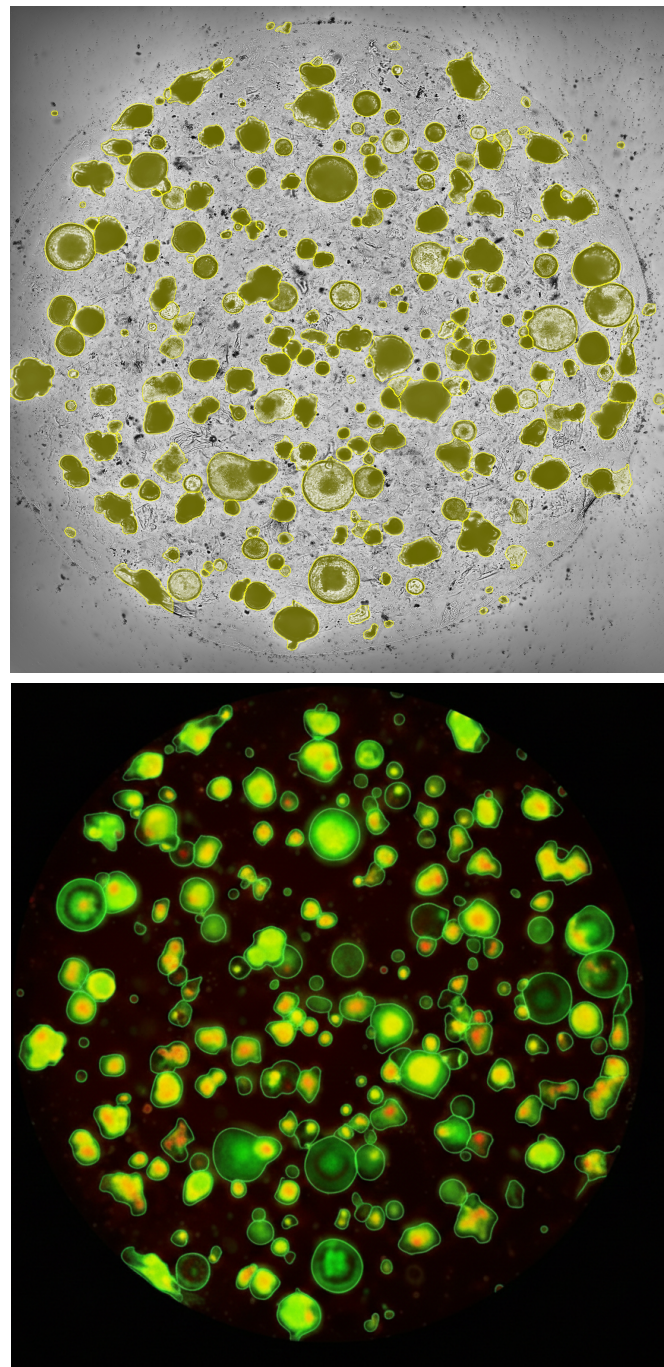


Calcium Spikes

Ultra-fast sampling for precise kinetic waveform analysis. Seamlessly monitor the calcium flux of 3D cardiac organoids, neuronal firing patterns and network-level responses through long-term calcium transient tracking.



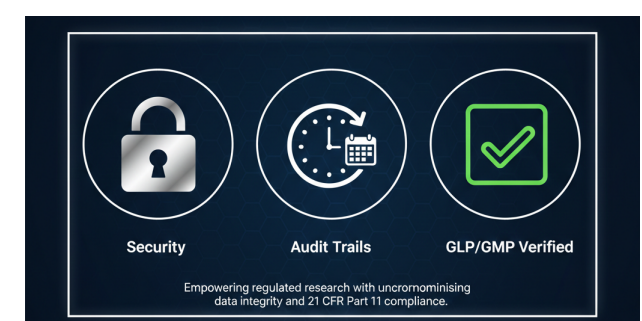
Real-time 3D Functional Profiling Effortlessly monitor the dynamic interplay between different fluorescent signals within organoid.



Specifications

Model	EOS1	EOS6
Imaging Modes	Brightfield, Phase Contrast, Fluorescence (R/G/B/Nir)	
Objectives	4x, 10x, 20x, 40x(OPTIONAL)	
Camera	7.1MP CMOS	
Vessel Compatibility	Well-plates (6 to 384), Petri dishes, T-flasks, Slides	
Dimension&Weight	340mm Wx370mm Dx350mm H . 17Kg	430mm Wx480mm Dx405mm H. 27Kg
Z-Stacking&Stiting	Automated multi-layer imaging with software autofocus	
Data Output	JPEG, PNG,BMP,MP4, AVI, TIFF, RAW CSV, PDF Reports	
External operating conditions	5 - 40 °C, humidity 20 - 95 % , 230v	

Compliance: Fully compatible with **GLP/GMP** laboratory requirements. Empowering regulated research with uncompromising data integrity and **21 CFR Part 11** compliance.



Contact Us:

Website: www.hiscore-bio.com

LinkedIn: HISCORE

